



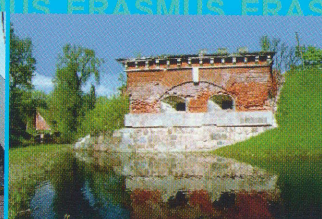
Lifelong
Learning
Programme

This project has been funded with the support from the European Commission. This publication [communication] reflects the views only of the author, and the Commission cannot be held responsible for any use which may be made of the information contained therein.

DAUGAVPILS UNIVERSITY



ERASMUS



CONTACT INFORMATION

International and Public Relations Office

Vienības street 13 - 215a

Daugavpils, LV-5401

E-mail: ssad@du.lv

www.du.lv

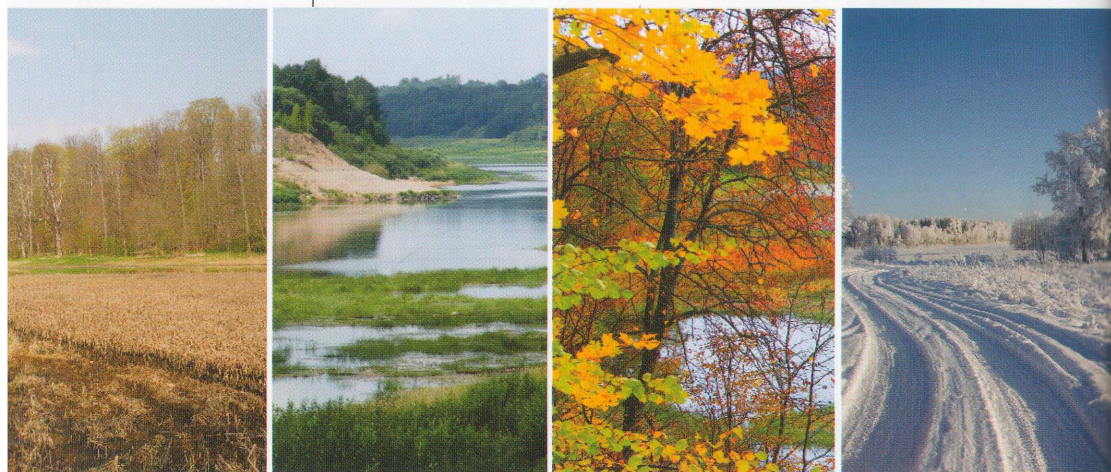
CONTENT

LATVIA IN BRIEF.....	2
DAUGAVPILS.....	3
DAUGAVPILS UNIVERSITY.....	4
FACULTIES.....	5
Faculty of Education and Management.....	6
Faculty of Humanities.....	7
Faculty of Natural Sciences and Mathematics.....	8
Faculty of Music and Arts.....	10
Faculty of Social Sciences.....	11
LIBRARY.....	12
LLP/ERASMUS PARTNER UNIVERSITIES.....	13
APPLICATION DOCUMENTS FOR ERASMUS EXCHANGE STUDIES.....	15
STUDENT CARD.....	16
LANGUAGE COURSES.....	16
SPORTS FACILITIES.....	16
STUDENTS' ACTIVITIES.....	17
RESIDENCE PERMIT AND VISA.....	17
EUROPEAN CREDIT TRANSFER SYSTEM.....	18
GRADING SYSTEM.....	18
ACCOMMODATION.....	18
ARRIVING TO DAUGAVPILS.....	19
ARRIVING TO DAUGAVPILS.....	19
CITY SIGHTS.....	20
OTHER PLACES IN THE CITY.....	21
HEALTH INSURANCE.....	21
MEDICAL FACILITIES.....	21
MEALS.....	22
ENTERTAINMENT.....	23
COST OF LIVING.....	24
USEFUL VOCABULARY (ENGLISH - LATVIAN).....	25
USEFUL LINKS.....	26

LATVIA IN BRIEF



Area	64,589 km ²
Population	2,067,900
Government	Parliamentary Constitutional Republic
Official Language	Latvian
Capital City	Rīga
Major Cities	Daugavpils, Rēzekne, Liepāja, Ventspils, Jelgava, Valmiera, Jūrmala
National Currency	Lats (LVL), 1 lats consists of 100 santims
Climate	Summer average +18°C, winter average -3°C
Time	GMT +2 (GMT +3 in summer)
Ethnic Composition	62.1% Latvians, 26.9% Russians, 3.3% Belarusians, 2.2% Ukrainians, 2.2% Poles, 1.2% Lithuanians
Independence Day	18th of November
Public Holidays	January 1 - New Year, March/April - Easter, May 1 - Labor Day, May 4 - The Day of Declaration of the Independence of the Republic of Latvia, June 23-24 - Ligo, Midsummer night, November 18 - The Proclamation day of the Republic of Latvia, December 24, 25, 26 - Christmas, December 31 - New Year's Eve



www.du.lv www.du.lv www.du.lv www.du.lv www.du.lv

DAUGAVPILS

Daugavpils is a city in south-eastern Latvia, located on the banks of the Daugava River, from which the city gets its name. It is the second largest city in Latvia. The city was established around the Dinaburg Fortress, built by the Livonian Order of German Knights in 1275. Daugavpils developed on the crossroads of various cultures and religions. For centuries, it was ruled by the Polish-Lithuanian Commonwealth, and later the Russian Empire took control.

Daugavpils is located approximately 230 km south-east of the capital of Latvia, Riga, on the banks of the Daugava River which is over 1000 km in length and which flows from its source in Russia, through Belarus and Latvia before entering the Baltic Sea via the Gulf of Riga.

Daugavpils is a big industrial centre and railway junction in the southeast of Latvia. It has railway connections with Riga, Moscow, St. Petersburg, Vilnius and Panevezhis. There are facilities and capacities for the development of air traffic.

Daugavpils is a spacious, green city with a delightfully provincial charm. Despite its quaint atmosphere and low prices, the city possesses fully modern services.



www.du.lv www.du.lv www.du.lv www.du.lv www.du.lv

DAUGAVPILS UNIVERSITY (DU) is situated in south - east part of Latvia. It was founded in 1921 and is the biggest university in eastern Latvia. We offer 58 study programmes that train biologists, programming engineers, physicists, intercultural relations managers, institutional managers, economists, psychologists, artists, linguists, interpreters, career consultants and other specialists. DU is the member of European University Association, European Science Events Association, and European Union Universities of Small States and more than 60 different Latvian or international Associations.

At the moment the university has approximately 3200 full - time and part - time students who study in academic or professional bachelor's, master's, and doctoral programmes.



FACULTIES

FACULTY OF HUMANITIES

Vienības str. 13, 314-316, Daugavpils, LV-5401, Latvia
Phone: +371 65424238, fax: +371 65422611, E-mail: hf@du.lv

Bachelor level study programmes	Master level study programmes	Doctoral level study programmes
Latvian Philology Russian Philology English Philology with German/ Swedish/ French/ Spanish or Polish as a second language German Philology with English/ Swedish/ French/ Spanish or Polish as a second language Polish Philology with English/ German/Swedish/ French or Spanish as a second language History History (History of Culture) East European Culture and Business Relations	Translator / Interpreter Philology (Latvian, Russian, English, German) Comparative Philology History and Theory of Culture History Intercultural relations Teacher of secondary education: <ul style="list-style-type: none"> Teacher of Latvian language and literature (<i>first language/ second language</i>); Teacher of Russian language and literature (<i>first language/ foreign language</i>); Teacher of English and Swedish, German, Spanish, Polish or French language; Teacher of German and Swedish, English, Spanish, Polish or French language; Teacher of Polish and Swedish, English, Spanish, German or French language; Teacher of History and Social Sciences or Cultural Studies; Teacher of Cultural Studies. 	Linguistics Literary science History

DEPARTMENTS

Department of English Philology

Vienības str. 13 – 408,
Daugavpils, LV-5401, Latvia
Phone: +371 65422994
E-mail: afk@du.lv

Department of Russian and Slavic Linguistics

Vienības str. 13 – 109,
Daugavpils, LV-5401, Latvia
Phone: +371 65424238
E-mail: rsk@du.lv

Department of Latvian Literature and Culture

Vienības str. 13 – 318,
Daugavpils, LV-5401, Latvia
Phone: +371 65424238
E-mail: llkk@du.lv

Department of Latvian Language

Vienības str. 13 – 308,
Daugavpils LV-5401, Latvia
Phone: +371 65424238
E-mail: lvk@du.lv

Department of German Philology

Vienības str. 13 – 406,
Daugavpils, LV-5401, Latvia
Phone: +371 65422994
E-mail: vfk@du.lv

Department of History

Vienības str. 13 – 109,
Daugavpils, LV-5401, Latvia
Phone: +371 65424238
E-mail: vk@du.lv

INSTITUTES AND CENTRES

Centre of Russian Culture and Language

Vienības str. 13 - 103
Daugavpils LV-5401, Latvia
Phone: +371 65471571
E-mail: kc@du.lv

Institute of Comparative Studies

Vienības str. 13 - 323
Daugavpils, LV-5401, Latvia
Phone: +371 65424238
Fax: +371 65422611
E-mail: ki@du.lv

Centre of Oral History

Vienības str. 13 - 311A,
Daugavpils, LV-5401, Latvia
Phone: +371 65424238
E-mail: mvc@du.lv

The Foreign Language Centre

Vienības str. 13 - 410
Daugavpils, LV-5401, Latvia
Phone: +371 65422994
e-mail: svesvaloducentrs@du.lv

Regional German Language and Country Studies Centre for Further Education

Vienības str. 13 - 401
Daugavpils, LV-5401, Latvia
Phone: +371 654 26535
E-pasts: vvtc@du.lv



www.du.lv www.du.lv www.du.lv www.du.lv www.du.lv

FACULTY OF EDUCATION AND MANAGEMENT

Parādes str. 1 - 220, Daugavpils, LV-5401, Latvia
Phone: +371 65428636; fax: +371 65422890, E-mail: ivf@du.lv

Bachelor level study programmes	Master level study programmes	Doctoral level study programmes
Pre-school Teacher Primary School Teacher Teacher of Sports	Management of Society and Institutions Pedagogy Social work Educational Psychologist Career Consultant and Youth Affairs' Specialist	Pedagogy

DEPARTMENTS

Department of Pedagogy and Pedagogical Psychology

Parādes str. 1 - 205, 204, Daugavpils, LV-5401, Latvia
Phone: +371 654 28209
E-mail: pppk@du.lv

Department of Educational Methodologies

Parādes str. 1 - 210, Daugavpils, LV-5401, Latvia
Phone: +371 65428636
E-mail: mmk@du.lv

Institute of Sustainable Education

Parādes str. 1 - 432
Daugavpils, LV-5401, Latvia
Phone: +371 654 27 411
E-mail: iii@du.lv
Web-site: <http://www.ise-lv.eu/>

www.du.lv www.du.lv www.du.lv www.du.lv www.du.lv

FACULTY OF NATURAL SCIENCES AND MATHEMATICS

Parādes str. 1, Daugavpils, LV-5401, Latvia
Phone: +371 654 22302, E-mail: dmf@du.lv

Bachelor level study programmes	Master level study programmes	Doctoral level study programmes
Biology Mathematics Physics Computer science Environmental science Physiotherapy Information technologies Chemistry	Biology Mathematics Physics Computer science Environmental planning Labour Protection Teacher of secondary education: <ul style="list-style-type: none"> teacher of biology and chemistry; teacher of geography and chemistry; teacher of physics and mathematics; 	Biology Mathematics Solid state physics

DEPARTMENTS

Department of Computer Science

Parādes str.1 – 413, Daugavpils, LV-5401, Latvia
Phone: +371 65427814
E-mail: ik@du.lv

Department of Physics

Parādes str.1 – 236, Daugavpils, LV-5401, Latvia
Phone: +371 65422302
E-mail: fk@du.lv

Department of Chemistry and Geography

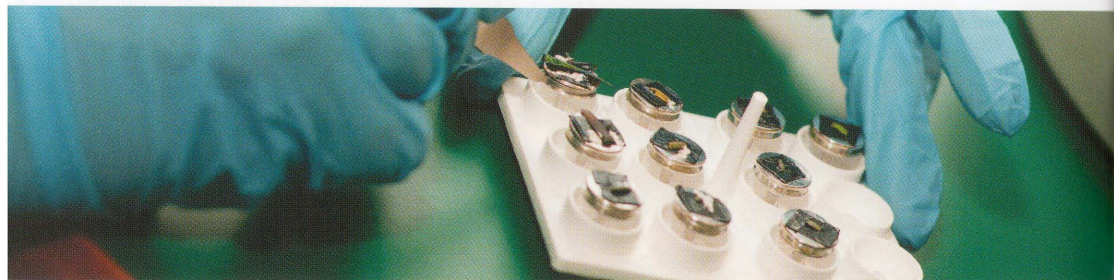
Parādes str.1 – 309, Daugavpils, LV-5401, Latvia
E-mail: kgk@du.lv

Department of Mathematics

Parādes str. 1 – 223, Daugavpils, LV-5401, Latvia
Phone: +371 65422302
E-mail: mk@du.lv

Department of Anatomy and Physiology

Parādes str.1 – 107, Daugavpils, LV-5401, Latvia
Phone: +371 29123775
E-mail: afiz@du.lv



www.du.lv www.du.lv www.du.lv www.du.lv www.du.lv

INSTITUTES AND CENTRES

Institute of Ecology

Vienības str. 13 - 209
Daugavpils, LV-5401, Latvia
Phone: +371 65425297
E-mail: arturs.skute@du.lv

Institute of Systematic Biology

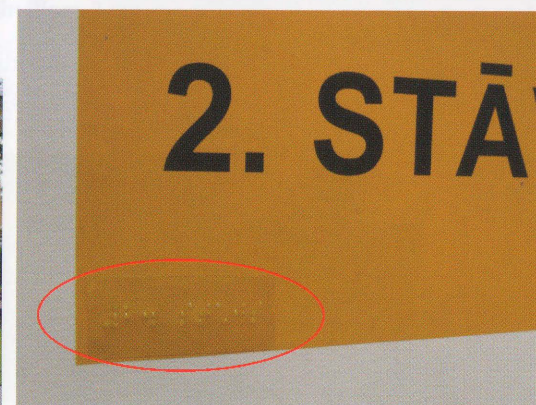
Vienības str. 13, - 229
Daugavpils, LV-5401, Latvia
Phone: +371 65426719
E-mail: info@biology.lv

G.Liberts' Innovative Microscopy Centre

Parādes str. 1 -129
Daugavpils, LV-5401, Latvia
E-mail: edmunds.tamanis@du.lv

Study and research base «Ilgas»

The building is adapted for people with disabilities, for example: special restrooms (shower cabins and WC) for people with motion disorders, a ramp for wheel - chairs with the exit to an automatic door, the doorways are widened, a lift is installed inside the building. For people with sight malfunctions stripes of contrast colours are painted along the walls and on the floor. Braille script is used in inscriptions.



www.du.lv www.du.lv www.du.lv www.du.lv www.du.lv

FACULTY OF MUSIC AND ARTS

Saules str. 1/3, Daugavpils, LV-5401, Latvia
Phone: +371 65440817, +371 65424479, E-mail: mmf@du.lv

Bachelor level study programmes	Master level study programmes
Art Computer design Professional Education Teacher of Music Management of Art	Teacher of Professional Music Subjects Art Teacher of Secondary Education: <ul style="list-style-type: none"> Teacher of Visual Art; Teacher of Visual Art and Technical Graphics; Teacher of Audio-visual Arts;

DEPARTMENTS

Department of Instrumental Play and Theory of Music

Saules str. 1/3, Daugavpils, LV-5401, Latvia
Phone: +371 65440819
E-mail: ismtk@du.lv

Department of Chorus Conducting

Saules str. 1/3, Daugavpils, LV-5401, Latvia
Phone: +371 65440818
E-mail: kdk@du.lv

Department of Art and Design

Saules str. 1/3, Daugavpils, LV-5401, Latvia
Phone: +371 65424634
E-mail: maksla@du.lv

Institute of Art

Saules str. 1/3 - 203,
Daugavpils, LV- 5401, Latvia

FACULTY OF SOCIAL SCIENCES

Parādes str. 1 - 321, Daugavpils, LV-5401, Latvia
Phone/ fax: +371 65428629, E-mail: szf@du.lv

Bachelor level study programmes	Master level study programmes	Doctoral level study programmes
Civil Security and Protection Economics Psychology Sociology Law	Economics Psychology Law	Economics Psychology Law

DEPARTMENTS

Department of Economics

Parādes str. 1 – 331, Daugavpils, LV-5401, Latvia
Phone.: +371 65420032
E-mail: ek@du.lv

Department of Social Psychology

Parādes str. 1 – 303, Daugavpils, LV-5401, Latvia
Phone: +371 65427 737
E-mail: spk@du.lv

Department of Sociology

Parādes str. 1 – 312, Daugavpils, LV-5401, Latvia
Phone: +371 65428629
E-mail: sk@du.lv

Department of Law

Parādes str. 1 – 235, Daugavpils, LV-5401, Latvia
Phone: +371 65426311
E-mail: spk@du.lv

Institute of Social Investigations

Parādes str. 1, - 421
Daugavpils, LV-5401
E-mail: spi@du.lv
Home page: <http://spi.du.lv>

LIBRARY

The library has a large collection of book, journals, newspapers, audio - visual materials, and all kinds of electronic resources in different world languages. There are 322864 items in the holdings of the DU library of which 275733 items are books, 30143 - periodicals and 16988 - other publications.

The Main Library is situated on Saules street 1/3. It has an information Hall, extensive reading - room and contains the largest part of the collection. However, there is a library with its own reading - room in every one of the three Study Buildings.

The University library offers:

- internet access in reading - rooms and departments;
- library information hall with 11 computers;
- automatized reader service system.

The following scientific journal data bases are available from the DU net:

- Science Direct - www.sciencedirect.com
- Springer Link - www.springerlink.com
- Cambridge Journals Online - www.cambridge.org
- EBSCO - www.search.epnet.com
- Integrum
- LETA archive - www.leta.lv
- Letonika - www.letonika.lv
- LURSOFT
- NOZARE - www.nozare.lv
- RUBICON
- Scopus - www.scopus.com
- Westlaw International
- World Bank e - library

For more information, visit the library website: <http://du.lv/lv/biblioteka>



www.du.lv www.du.lv www.du.lv www.du.lv www.du.lv

LLP/ ERASMUS PARTNER UNIVERSITIES

United Kingdom	York St.John University
Belgium	Katholieke Hogeschool Zuis-West-Vlaanderen
Bulgaria	Sofia University "St. Kliment Ohridski" St.Cyril and St.Methodius University of Veliko Turnovo
Croatia	University of Rijeka
Czech Republic	University of Pardubice Masaryk University
Denmark	University College Lillebaelt University of Copenhagen University College UCC
France	University of Picardie Jules Verne University of Paris 8
Estonia	Tallinn University Tartu University
Lithuania	Siaulai University Vilnius Gediminas Technical University Vilnius Pedagogical University Vilnius University Vytautas Magnus University Lithuanian University of Agriculture Kaunas University of Technology Klaipeda University Panevežio Kolegija Lithuanian Academy of Music and Theatre Vilnius Academy of Arts Lithuanian University of Educational Sciences Aleksandras Stulginskis University
Poland	Pedagogical University of Cracow Jagiellonian University The John Paul II Catholic University of Lublin Nicolaus Copernicus University The Jan Kochanowski University in Kielce University of Bialystok University of Lodz University of Silesia University of Warsaw Warsaw University of Life Sciences National Defence University University Adam Mickiewicz

www.du.lv www.du.lv www.du.lv www.du.lv www.du.lv

Poland	University of Economy in Bydgoszcz
	Szczecin University
	State School of Higher Education in Plock
	University of Warmia and Mazury in Olsztyn
	Wyższa Szkoła Pedagogiczna TWP w Warszawie
	College of Foreign Languages in Czestochowa
	Marie Curie – Skłodowska University
Portugal	Pomerian University in Slupsk
	Higher School of Socialadministration
Romania	University of Beira Interior
Romania	West University of Timisoara
Slovakia	University of Ss. Cyril and Methodius in Trnava
	University of Kosice
Finland	University of Eastern Finland
	University of Helsinki
Spain	University of Madrid
	Univeristy of Murcia
Switzerland	Scuola Universitaria Professionale della Svizzera Italiana
Turkey	Anadolu University
	Ankara Univeristy
	Amasya University
	Celal Bayar University
	Cukurova University
	Haccettepe University
	Kafka University
	Mehmet Akif Ersoy University
Tunceli University	
German	University of Vechta
	University of Augsburg
Hungary	Tessed Samuel College
Sweden	University of Gothenburg
	Stockholm University



www.du.lv www.du.lv www.du.lv www.du.lv www.du.lv

APPLICATION DOCUMENTS FOR ERASMUS EXCHANGE STUDIES

All application documents are available in internet :

- Application Form (remember that it must be filled electronically, printed and signed).
- Learning agreement
- Transcript of records
- Copy of passport
- Copy of valid health insurance
- 2 passport sized photos

Fill in the following documents and send to the DU International and Public Relations Office:

International and Public Relations Office
Vienības street 13 – 215a,
Daugavpils, LV-5401
Latvia

After receiving originals of documents they will be verified and students will receive letter of acceptance.

APPLICATION DEADLINES

For the winter semester: **June 15**

For the spring semester: **October 15**

Erasmus students are asked to inform International and Public Relations Office about the dates of their arrival.

ACADEMIC CALENDAR

The academic year lasts 9 months, starting on 1st September and ending in the middle of June.

The academic year is divided into 2 semesters:

Winter semester: September 1 – January 31

Spring semester: February 1 – June 31

www.du.lv www.du.lv www.du.lv www.du.lv www.du.lv

STUDENT CARD

All Erasmus students who are studying at Daugavpils University receive International Student Identification Card (ISIC). ISIC is required when you want to use library materials, sport services and for most student facilities.

ISIC gives discounts in pubs, clubs, cinemas, theatres and many other.

LANGUAGE COURSES

Daugavpils University is organizing Erasmus Intensive Language Courses (EILC). If the student is interested in these courses, please contact International and Public Relations Office (e-mail: ssad@du.lv, Phone: +371 65421606).

SPORT FACILITIES

You can enjoy basketball, volleyball, swimming, tennis, athletics or aerobics at the Sport Complex of Daugavpils University. You do not have to pay any fee there.

Sport Complex

Kandavas street 1, Daugavpils, LV - 5400



STUDENTS' ACTIVITIES

Students' Council

Students' Journal „Lai Top!”

Dance Ansamble „Laima”



RESIDENCE PERMIT AND VISA

Citizens of the European Union (EU) and the European Economic Area (EEA) need only valid travel documents, i.e. passports or identity cards to come to Latvia.

If the duration of stay is longer than 90 days (3 months), students must apply for a residence permit. It can be obtained at the Department of Citizenship and Migration after arriving in Latvia. Necessary documents are the passport, 2 photos, valid health and life insurance policy and a confirmation from Daugavpils University.

Non - EU nationals have to check if they need a visa to enter Latvia. The list of countries whose citizens do not need visas is available on <http://www.mfa.gov.lv/en/error404/>

For more information, visit the Office of Citizenship and Migration Office website <http://www.pmlp.lv/en/>

If students from outside EU come for a longer period than 90 days, they must apply for a residence permit in a Latvian Embassy abroad. Please note that it may take up to several weeks to obtain a visa or a residence permit. Therefore application procedures should be started as early as possible.

EUROPEAN CREDIT TRANSFER SYSTEM (ECTS)

ECTS credits are a value allocated to course units to describe the student workload required to complete them. They reflect the quantity of work each course requires in relation to the total quantity of work required to complete a full year of academic study at the institution, that is, lectures, practical work, seminars, private work in the laboratory, library or at home and examinations or other assessment activities.

The students participating in ECTS will receive full credit for all academic work successfully carried out at any of the ECTS partner institutions and they will be able to transfer these academic credits from one participating institution to another on the bases of prior agreement on the content of study programmes abroad between students and the institutions involved. When the student has successfully completed the study programme previously agreed between the home and the host institutions and returns to the home institution, credit transfer will take place, and the student will continue the study course at the home institution without any loss of theme or credit.

GRADING SYSTEM

Achievement level	Grade	Meaning	Approx. ECTS grade
Very high	10	With distinction	A
	9	Excellent	A
High	8	Very good	B
	7	Good	C
Medium	6	Almost good	D
	5	Satisfactory	E
	4	Almost satisfactory	E/FX
Low	3 - 1	Unsatisfactory	Fail

ACCOMMODATION

Students who wish to have University accommodation must tick that in the application form. Note that dormitory offer double rooms only, you will have to share it with other student. The dorm offers: shared bathroom facilities (one bathroom and a toilet per two rooms), a kitchen on every floor and a laundry on first floor, internet access. Linen and bedding can be borrowed from the university (linen and bedding changing 2 times per month). But of course it is possible to bring your own linen. You have to supply your own towels.

The International Office offers assistance in finding private accommodation, but living in dormitory is one of the best ways to get to know other people and University.

The monthly rent for dormitory is 35 LVL (50 EUR) per month. The fee includes heating, lights, water and furniture.

Extra fees: internet, laundry washing.

ARRIVING TO DAUGAVPILS

There are several options of coming to Daugavpils.

 **BY PLANE** to Riga – <http://www.riga-airport.com/en>

In order to get there from the airport you can either take a taxi (price approx. EUR 14.00) or city bus number 22. (<http://www.riga-airport.com/en/main/passengers/useful-information/getting-to-the-airport/taxi>).

 **BY TRAIN**

From Riga (Central railway station) to Daugavpils – approximately 3,5 hours (<http://www.1188.lv/transport/train>). The central railway station is situated in the centre of Riga.

 **BY BUS**

There is also good network of buses from Riga. Please consult the website: <http://www.1188.lv/transport/bus>

 **TRANSPORT IN TOWN**

Daugavpils has a good network of buses and trams, which connects the city centre (where the DU's main buildings are situated) with all parts of the city. It runs quite frequently until approximately 11.30 – 12.00 p.m., depending on the line. The price of ticket for one trip is LVL 0.30 by bus and LVL 0.30 by train



CITY SIGHTS

Daugavpils tourism information centre

Rīgas str. 22a, Daugavpils, LV-5403, Latvia
<http://www.visitdaugavpils.lv/eng>

In Daugavpils

- Daugavpils Fortress, also known as Dinaburg Fortress. It is the only early 19th century military fortification of its kind in Northern Europe that has been preserved without significant alterations.
- Church hill with the churches of the four major religions of the region, the biggest Orthodox cathedral in Latvia.
- Daugavpils museums of regional studies and arts.
- Daugavpils Clay Art Centre.
- Mark Rothko Exhibition Hall.
- Latgale Zoo.

Out of town:

Dinaburga castle ruins and castle model - the Ancestor of Daugavpils. It is an important historical object for the region of Naujene today.

Slutišķi - the old believer's village. It is an open - air ethnographic museum. This original, ancient old believer settlement was far from the roads. Slutišķi is located in a picturesque place on a bend of the river Daugava. It makes indelible impression.

«Daugavas loki» Nature Park - one of the richest and most unusual nature parks in Latvia in terms of its natural resources, the surrounding environment, the landscapes, the biological diversity of the area, and the cultural monuments which are found there.

Aglona Basilica - Every year on the 15th of August, pilgrims congregate in Aglona to mark the Assumption of the Virgin Mary into Heaven. This is one of the best known sacred sites in the world; groins vaults, arches and columns richly decorated in rococo style can be found inside.

Aglona Bread museum;

The king's hill of Christ - The King's Hill of Christ is a unique compilation of sculptures opened to public in 2006 and located on the shore of Egle Lake 2km from Aglona Basilica. The sculpture park was set up as a spiritual place paying tribute to the Lord Jesus Christ.

Devil's lake - This clean, almost bottomless lake is one of the legendary places in Latgale, the land of blue lakes.



www.du.lv www.du.lv www.du.lv www.du.lv www.du.lv

OTHER PLACES IN THE CITY

Daugavpils Olympic Centre - Stadiona str. 1, Daugavpils, www.daugavpilsoc.lv

You are welcome to use swimming pool, sauna, aerobics hall, fitness training.

Sport and Recreation Complex «Olimpija» - Valkas str. 2, Daugavpils. Swimming pool, bathhouse, SPA - <http://www.hotel-olimpija-sk.lv>

Sport Complex «Celtnieks» - Jelgavas str. 7, Daugavpils. Sports and games, swimming pool, stadiums, bathhouse.

Sport complex «Vaduguns» - Cietokšņa str. 33, Daugavpils. Sports and games, swimming pool, bathhouse.

Stropu Lake beach and «Stropu vilnis» beach in Daugavpils - <http://www.hotel-olimpija-sk.lv/>

HEALTH INSURANCE

EU/EEA citizens should obtain the European Health Card before coming to Latvia. However, this card will only provide emergency help free of charge on the same terms as for local citizens.

MEDICAL FACILITIES

There is a medical fee there. However you can go other doctor, but there you will have to pay a charge for visit in amount of 10-20 LVL (14 - 28 EUR), most doctors (in our university's cabinet also) do not speak English or German; therefore it is advisable to take a Latvian person with you.

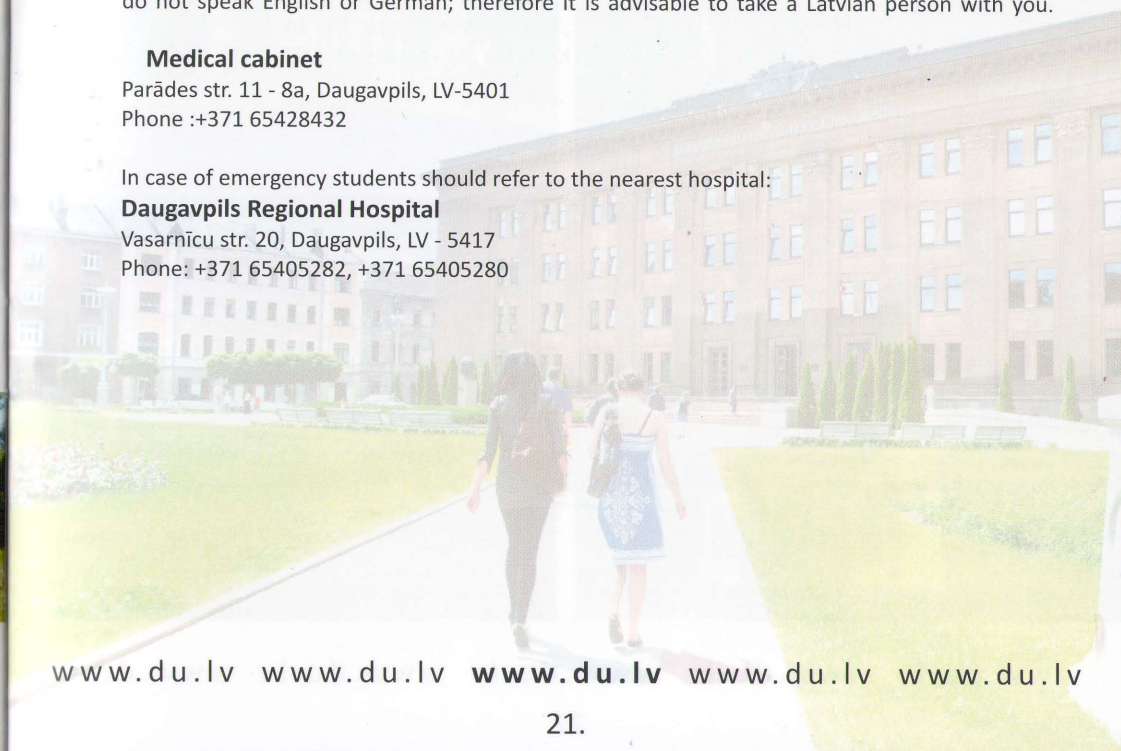
Medical cabinet

Parādes str. 11 - 8a, Daugavpils, LV-5401
Phone :+371 65428432

In case of emergency students should refer to the nearest hospital:

Daugavpils Regional Hospital

Vasarnīcu str. 20, Daugavpils, LV - 5417
Phone: +371 65405282, +371 65405280



www.du.lv www.du.lv www.du.lv www.du.lv www.du.lv

MEALS

Daugavpils University has a canteen offering meals ranging from LVL 1.00 to LVL 2.00. Meals are provided on students own costs.

As the University is located in the centre of Daugavpils, it is possible to buy a prepared food (sallads, main courses, and desserts) in the supermarkets.

The following restaurants and bars are located relatively close to the Daugavpils University:

RESTAURANTS:

„Taller” - Viestura str. 59
 „Gubernator” - Lāčplēša str. 10
 „Vēsma” - Rīgas str. 49
 „Lidadis Park” - Rīgas str. 14
 „Leo” - Krāslavas str. 58
 „Plaza” - Ģimnāzijas str. 46
 „Alibaba” - Kandavas str. 4a
 „Mc Donald’s” - 18. Novembra str. 42
 „Mia Italia” - Rīgas str. 76
 „Tex - Mex” - Cietokšņa str. 60

COFFEE –BARS:

„Vita” - Rīgas str. 22a
 „Vēsma” - Rīga str. 49
 „Pasaules brīnumi” - Vienības str. 15
 „Chilli Pizza” - Rīgas str. 9, Cietokšņa str. 70
 „Antaris” - Viestura str. 10
 „Lobby” - Rīgas str. 46
 „Klondaika” - Lāčplēša str. 39b, Alejas str. 77
 „Noktirne” - Lāčplēša str. 14a
 „Randiņš” - Rīgas str. 74
 „Tbilisi” - Alejas str. 78
 „Ukrainska Hatka” - Cietokšņa str. 25
 „Hesburger” - Rīgas str. 55
 „Šokoladņa” - Alejas str. 89, Rīgas str. 25
 „Kebab” - Viestura str. 25 - 1a
 Kafejnīca „5” - Saules str. 12



ENTERTAINMENT

Cinema „Silver screen” - Cietokšņa str. 60, Daugavpils.

<http://www.silverscreen.lv/?lang=eng>. It is 10 minutes walking from the University.

Theatre - Rīgas str. 22a, Daugavpils.

it is situated in House of Unity (Vienības nams)

Ice-hall - Stacijas str. 45a, Daugavpils.

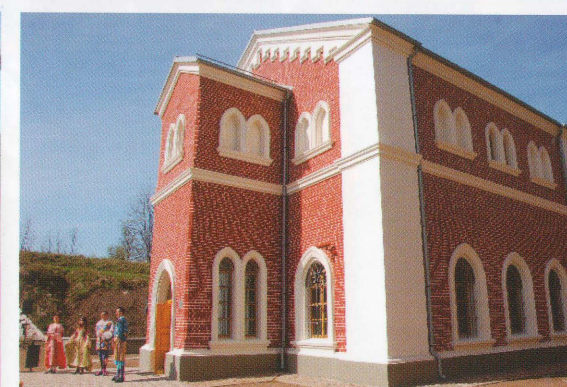
Offers its visitors to enjoy the amenities of winter sports the whole year round.

Recreation complex „Vilnis” - Dzintaru str. 74, Daugavpils district.

During summer season - comfortable beach, chaise lounges, sunshades, catamarans, water motorcycles, water ski, balloons, rowing boats, inflatable boats, a motorboat. Volleyball court.

Klondaika - Cietokšņa str. 60, Daugavpils.

offers: 10 Brunswick bowling lanes; restaurant Tex-Mex - Mexican and European cuisine; children's playroom; 4 pool tables (9 ft); 4 auto racing simulators Need for speed; virtual tennis; 2 space hockey tables; organizing of parties, events and tournaments; cosy bar; transmission of bowling games on the broad screen.



COST OF LIVING

The cost of living is rather pleasant for students from European Union countries. The cost of living depends on individual habits and lifestyle. We have made a table showing you some examples of the price level in Daugavpils.

Rent of room in dormitory per month	25 LVL = 35.57 EUR
Lunch at canteen	2 LVL = 2.8 EUR
Lunch at cafeteria	4 LVL = 5.7 EUR
Lunch at restaurant	15 LVL = 21.3 EUR
Bus Rīga - Daugavpils (230 km)	6,25 LVL = 9.0 EUR
Train Rīga- Daugavpils	5,45 LVL = 7.75 EUR
Local bus or tram ticket	0,30 LVL = 0.50 EUR
Theatre ticket	2 LVL = 2.8 EUR
Cinema ticket	3 LVL = 4.2 EUR
Sugar	0.8 LVL = 10 EUR
Salt	0.3 LVL = 0.4 EUR
1 kg of fish	4 LVL = 5.6 EUR
1 kg of meat	4 LVL = 5.6 EUR
1 loaf of bread	0.7 LVL = 1.00 EUR
1 l of milk	0.5 LVL = 0.7 EUR

Average student expenses per month 200 LVL = 285 EUR



www.du.lv www.du.lv www.du.lv www.du.lv www.du.lv

USEFUL VOCABULARY (ENGLISH - LATVIAN)

GREETINGS

Good morning	Labrīt
Good afternoon	Labdien
Good evening	Labvakar
Hi, hello	Čau, sveika/s
Good night	Ar labu nakti
Good bye	Uz redzēšanos

BASIC PHRASES AND WORDS

Yes	Jā
No	Nē
I know	Es zinu
I do not know	Es nezinu
Maybe	Varbūt
I am sorry	Atvainojos/ atvainojiet
I understand	Es saprotu
I do not understand	Es nesaprotu
What is your name?	Kā tevi sauc?
My name is...	Mani sauc...
I am from/ I come from	Es esmu no/ es nāku no..
I like	Man patīk
I do not like	Man nepatīk
I study	Es studēju
How much does it costs?	Cik tas maksā?
Cheap	Lēti
Expensive	Dārgi
What time is it?	Cik tagad ir pulkstenis?
Thank you	Paldies
Please	Lūdzu

www.du.lv www.du.lv www.du.lv www.du.lv www.du.lv

Latvian institute: <http://www.li.lv>.

Information about Latvia: <https://www.latvija.lv/>

Ministry of Foreign Affairs of the republic of Latvia <http://www.am.gov.lv/en>

Latvia time zone: <http://www.latvianholidays.com/time>

Latvian money converter: <http://www.latvianholidays.com/money>

Latvia area weather: <http://www.latvianholidays.com/weather>

Information about Latvian language: <http://www.latviatravel.info/language/>

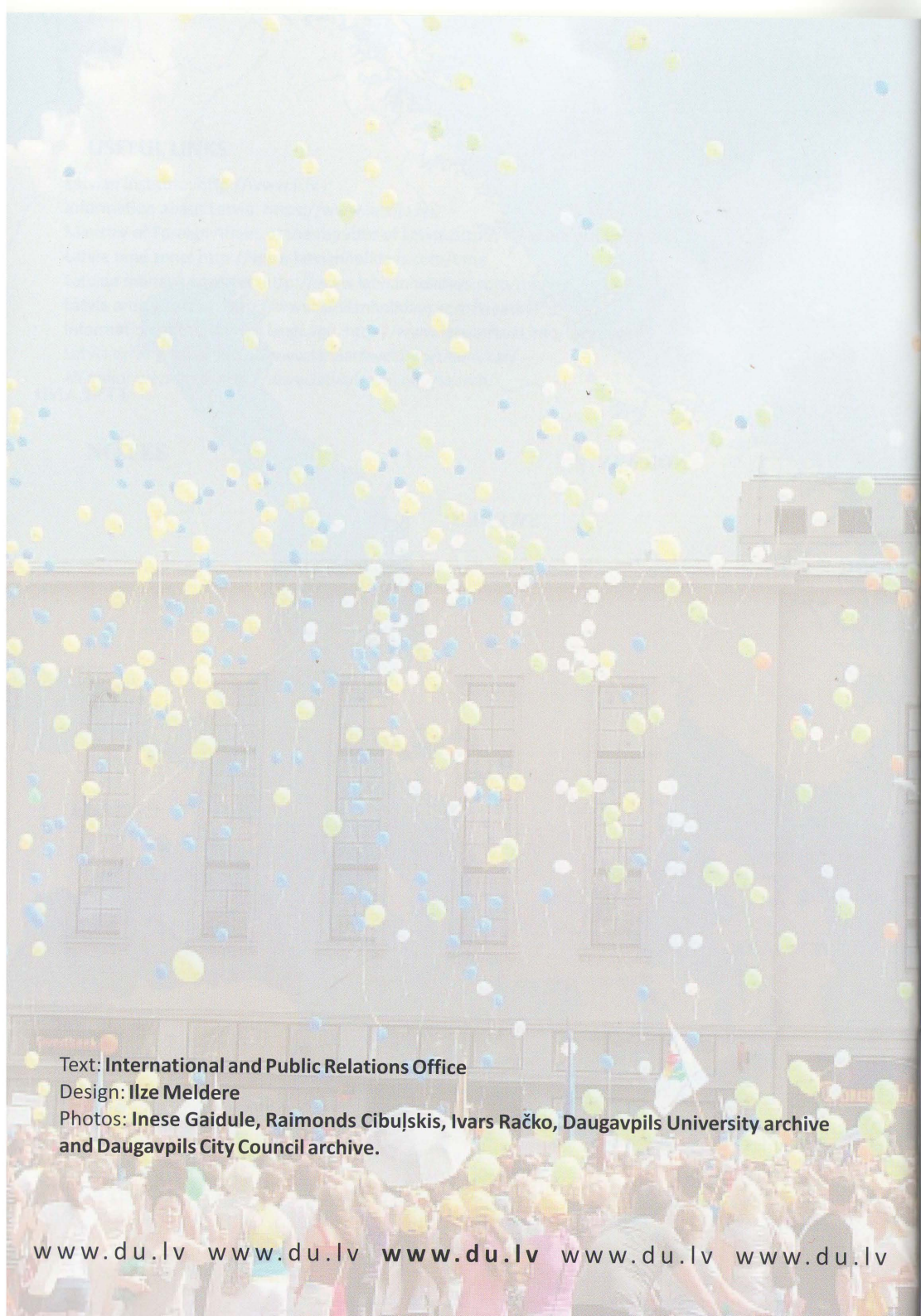
Latvia driving rules: <http://www.latviatravel.info/travel/car/>

All major web sites: <http://www.latviatravel.info/search/>

NOTES

www.du.lv www.du.lv **www.du.lv** www.du.lv www.du.lv





Text: **International and Public Relations Office**

Design: **Ilze Meldere**

Photos: **Inese Gaidule, Raimonds Cibulskis, Ivars Račko, Daugavpils University archive
and Daugavpils City Council archive.**

www.du.lv www.du.lv www.du.lv www.du.lv www.du.lv